



The Royal Palm

Tampa, Florida



3,746
SQ.FT.



2
STORY



4-5
BEDS



3
BATHS



0-1
OFFICE



3
GARAGE

www.DKVtampahomes.com | info@DKVinitatives.com

1 (888) 623-6973 ext102

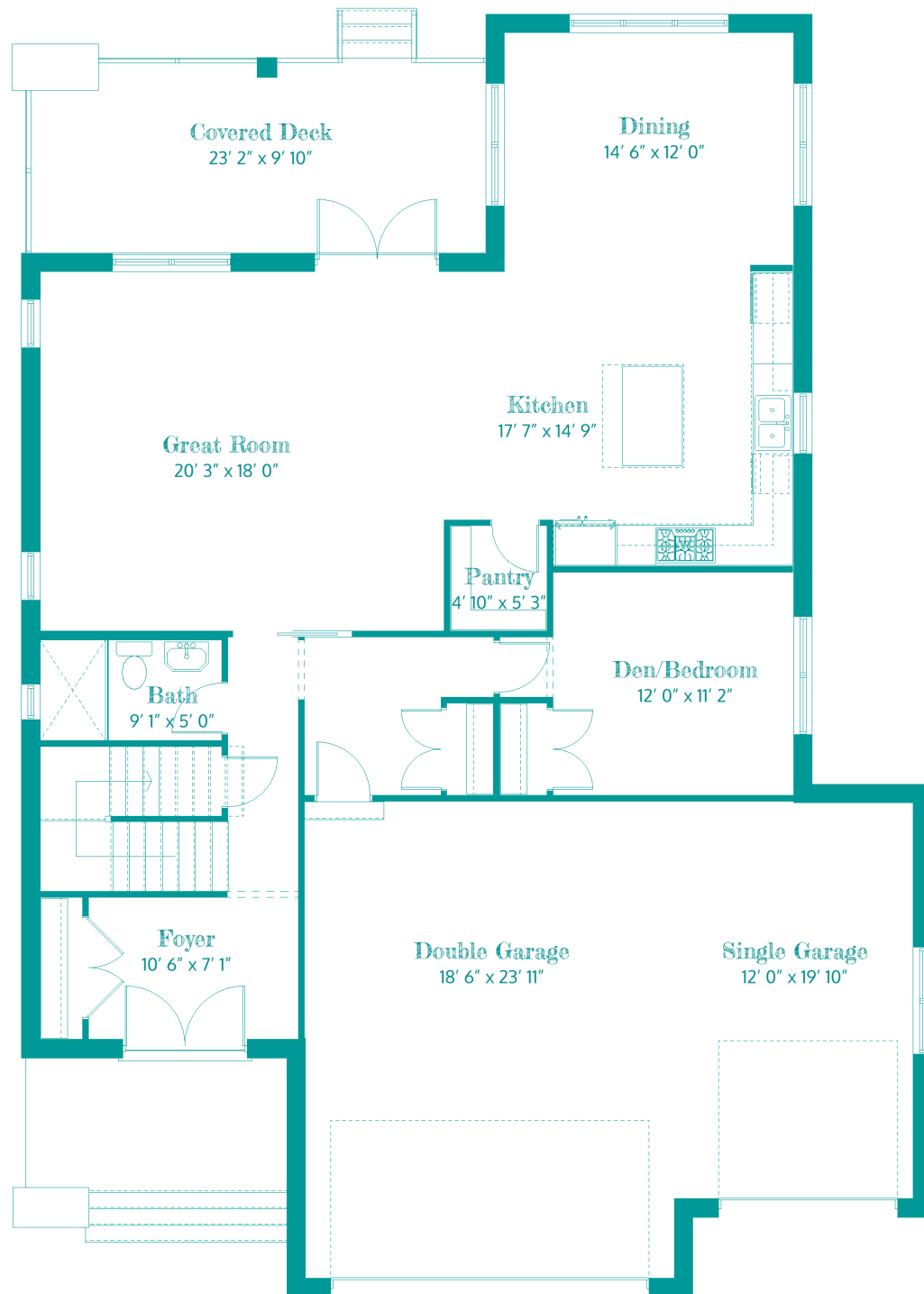
Main Floor Plan | 1,433 Sq. Ft.

The Royal Palm Main Floor Description

Welcome to the Royal Palm, the most luxurious design in the DKV Home Collection. Enter this gracious home with 10' main floor ceilings through a light-filled foyer complete with full size closet and grand staircase. Continue past a large main floor den (or 5th bedroom) into the spacious main floor living area comprised of kitchen, dining room and great room area.

Our beautiful floor plan boasts a gourmet kitchen with double wall ovens, a large eat-in island, extended pantry and a generous-sized dining room with large framed windows throughout. Double French doors lead to a stunning covered back deck perfect for entertaining.

This lovely main floor also has a beautifully appointed powder room and convenient mud room entrance from the three-car garage.



Second Floor Plan | 2,313 Sq. Ft.

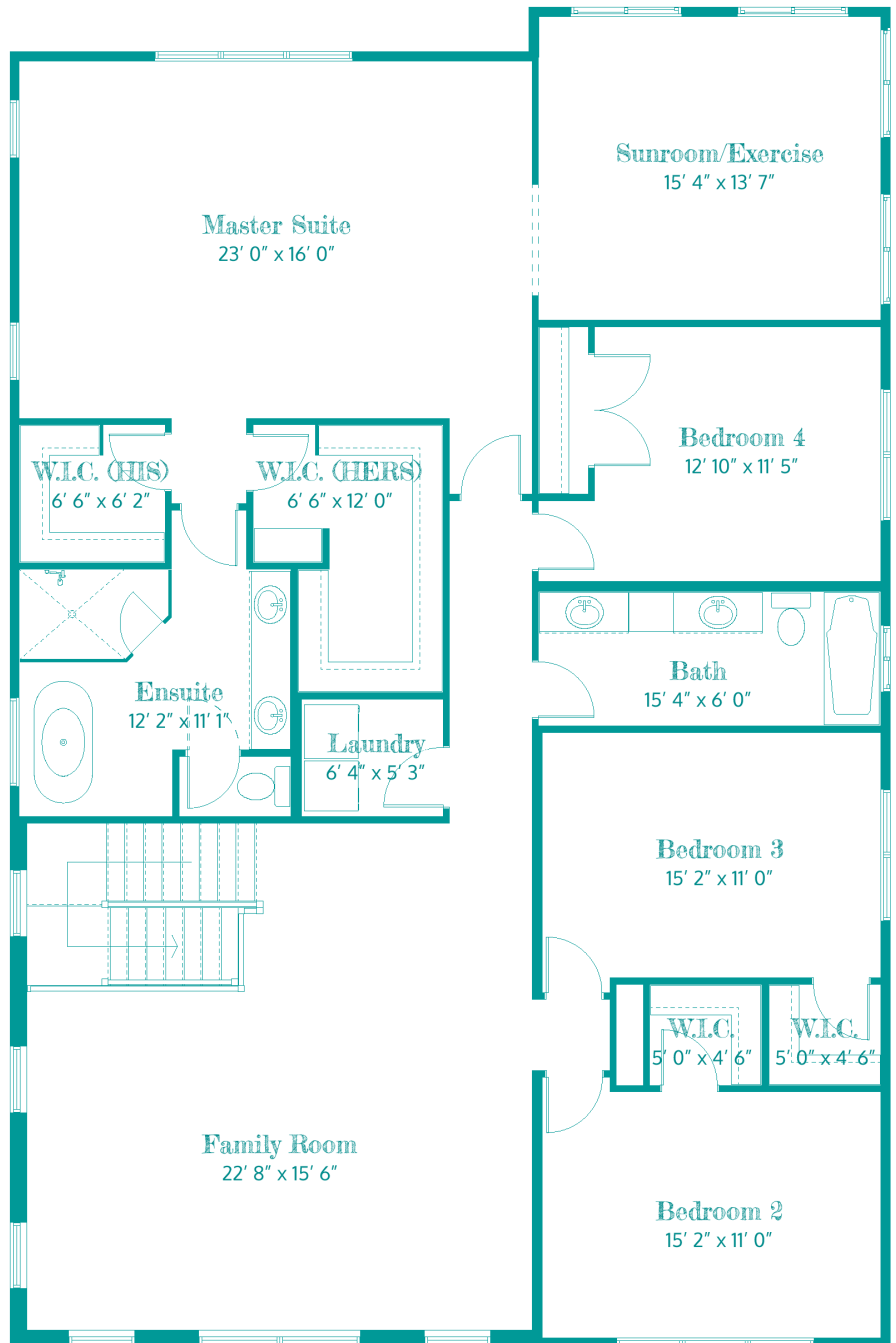
The Royal Palm

Second Floor Description

The highlight of the second level is certainly the soaring (up to) 17' ceiling of the clerestory family room with its two levels of windows and loft-like feel. Fall in love with the gorgeous private master suite complete with huge elegant spa-like master ensuite. Here you can luxuriate at the end of the day in your deep freestanding soaking tub or marble shower. Your suite showcases a spacious bedroom area with a huge walk-in closet for him and an enormous closet for her. This lovely master has a bonus.... your own private window-wrapped sunroom drenched in light, which can be used as a dressing room / exercise room/office right off the master retreat.

The second floor of this stunning home also has three additional bedrooms on the second level, all with oversize windows and walk-in closets. This level is finished with a second bathroom with dual sink vanity and a laundry room convenient to all bedrooms.

Welcome home!



Royal Palm Design Features

Upgraded Gourmet Kitchen

Gorgeous eat-in kitchen with quartz counter-top, oversized island with breakfast bar & optional sink/cooktop.

Solid wood cabinetry with 42" upper cabinets and over and under lighting.

Stainless apron sink and pulldown faucet.

Huge walk-in pantry.

Smudge-proof stainless top-of-the-line appliances.

Upgraded hand-scraped hardwood floor.



Main Floor

10' ceilings throughout main floor.

Spacious open concept living space with great room, kitchen dining area and 8' high double French doors leading to a lovely covered deck.

Elegant marble powder room.

Gracious double door entrance to foyer with grand staircase and full coat closet.

Formal dining room with coffered ceiling.

Large main floor study or nanny bedroom.

Three-car garage and convenient mud room entry.

Clerestory

Stunning family room with up to 17' soaring ceilings and double rows of windows creates a huge light-filled loft-like space ideal for family.

Second floor has lofty 9' ceilings and a convenient upper floor laundry.

Master Suite

Huge master suite oasis features large windows and oversized walk-in closets, with an extra grand closet for her featuring room for island to display shoes or handbags. The final jewel, a glorious window-wrapped sunroom, directly off the master which can be used as a private dressing room or exercise room/office.

Master Ensuite

A marble fantasy of spa-like luxury, this retreat showcases a designer freestanding soaking tub, a huge marble shower with rain-head and jet system, and a custom vanity with dual sinks and makeup area.

Private water closet and oversized frosted private window over freestanding soaking tub.



[DKVtampahomes.com](https://www.dkvhomes.com)

DKV Initiatives, Inc. reserves the right to revise the design and/or specifications as well as price, terms & availability. All dimensions are approximate.

